

Photo credit: ©Tom Evans

**DOROTHY KOZLOWSKI, PH.D.**  
**INTERIM DEAN AND VINCENT**  
**DEPAUL PROFESSOR OF**  
**BIOLOGICAL SCIENCES**

## NOTE FROM THE DEAN

It has been a full year since we published a college newsletter. I'm proud to say that it's not because that there was nothing to report. Instead, it was because we were extremely busy doing the good work of the College that it unfortunately fell through the cracks!

In Academic Year 2019-2020 we saw the launch of our CSH Strategic Plan, the creation of new majors and programs, the reinvention of the STEM Center, extensive research activity and grant funding, and the disruption of our campus environment due to COVID-19.

This newsletter provides a highlight of some of the many accomplishments of our faculty, staff and students, too many to capture in these pages. It also highlights how CSH stepped up to educate about COVID-19 and serve our communities during the pandemic.

I am tremendously proud of all of our accomplishments, but especially, the hard work and dedication of our faculty, staff, and students during these challenging last few months. We teach science and health by having students DO science and health, and transitioning that to a totally remote environment was not easy. As I conclude my time as Interim Dean, I thank you all for the support you have provided me. It was truly an honor.

Thank you!

Dorothy Kozlowski

## In this issue:

Note from the Dean	1
<u>Leadership Transition</u>	2-3
<u>College Highlights</u>	4-6
<u>College Response to COVID-19 Pandemic</u>	7-11
<u>CSH Faculty OpEd's</u>	12
<u>Graduate Student Feature</u>	13
<u>Awards, Recognitions, and Appointments</u>	14-26
<u>Faculty Publications</u>	27
<u>New Grants</u>	28-32



### “The Times They Are a-Changin’” – Bob Dylan



**Dorothy Kozlowski**

Dorothy Kozlowski stepped up to serve as the Interim Dean of the College of Science and Health for the past two years. She accomplished a great deal during this time, including development of the new College strategic plan, the development of new graduate programs in health (including speech language pathology, occupational therapy, nurse practitioner tracks and community psychology), the redevelopment of the STEM Center as a community of practice around STEM education outreach and under-represented student success, and a college profiling and branding project to enhance our position in the market.

Dr. Kozlowski has continued her research interest in how the brain tries to repair itself following traumatic brain injury through neuroplasticity. Her current emphasis is on using a model of repeat concussions to understand how they are linked to neurodegenerative disease. She has also begun a collaboration with Dr. Sonya Crabtree-Nelson in the School of Social Work to address the issue of traumatic brain injury in victims of domestic violence.

Dr. Kozlowski will step down and rejoin the College of Science and Health teaching and conducting research as Professor in the Department of Biological Sciences and the Neuroscience Program.

Throughout her tenure as Dean, Dr. Kozlowski fully embraced the Vincent mission. For example, Dr Kozlowski participated in the Vincentian Mission Institute, a two-year program studying the work of St. Vincent, St. Louise, and Catholic education leaders where she developed a deep understanding of what it means to be a Catholic, Vincentian and Urban institution. As Interim Dean, she highlighted the work that CSH did to advance the Vincentian Mission and encouraged faculty and staff to explore how their work advanced the mission as well.

The college was fortunate to have her leadership and is thankful for her work.



## CSH Leadership Transition

On July 1, 2020, Stephane Dance-Barnes will join the college to serve as Dean. Dr. Dance-Barnes currently serves as interim associate provost and dean of the University College of Lifelong Learning at Winston Salem State University (WSSU) in North Carolina. At that institution her responsibilities included oversight for institutional advising, academic services, and first year experience programming; she also carried out a strategic restructure of the entire unit. Dr. Dance-Barnes Co-chaired a Campus-Wide Student Success Steering Committee charged with developing and implementing a comprehensive university-wide student success strategy.

As a Department of Biological Sciences (DBS) chair, she actively transformed the curriculum and advising model, improved recruitment and marketing, increased focus on academic support services strategies, and promoted practices that encourage early exposure to undergraduate research and other high impact practices As a cancer researcher and associate professor of cell and molecular biology, she led a research laboratory at WSSU. She was PI on an NSF I-TEST grant to promote STEM education and careers and co-investigator on Department of Defense and NIH grants in cancer research.



**Stephanie Dance-Barnes**



Dr. Stephanie Dance-Barnes and her biology students' research have promoted health equity in local communities and beyond.

Shortly after she began working at Winston-Salem State in 2010, Dr. Dance-Barnes created Scientific Investigation of Diseases, a general education course modeled after the TV series "House M.D." A year later, she developed the Women in Science Program (WISP) to offer tools and resources for women in science, technology, engineering and mathematics (STEM) majors. The Women In Science Program was recognized with a national Inspiring Programs in STEM award. In addition, Dr. Stephanie T. Dance-Barnes was the recipient of the 2019 UNC System Board of Governors Award for Excellence in Teaching.

Her extensive administrative and teaching experience combined with her passion for

innovative scientific research will be a tremendous benefit for our diverse students at DePaul.

The college extends a warm welcome to Dr. Stephanie Dance-Barnes.

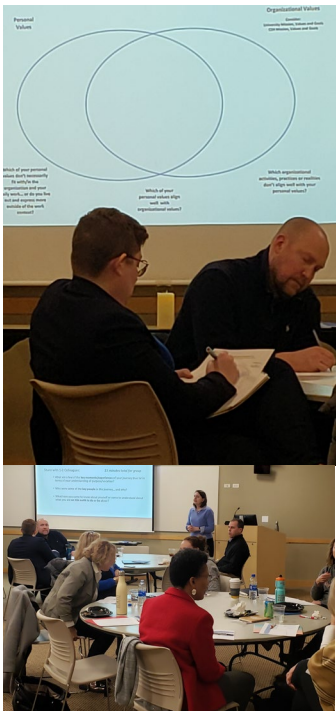
# COLLEGE OF SCIENCE AND HEALTH HIGHLIGHTS

## Explore Your Purpose

Vocation is a concept with deep roots in the Catholic tradition. The Explore Your Purpose at DePaul initiative seeks to cultivate a culture of vocation among DePaul's faculty, staff and students, in a way consistent with our Vincentian-Catholic mission. By cultivating vocation, the initiative seeks to foster a sense of personal meaning and social purpose as part of the educational environment at DePaul.



In a workshop facilitated by **Mark Laboe**, Associate Vice President, Mission and Ministry and **Siobhan O'Donoghue** (both in photo above), faculty and staff in the College of Science and Health were challenged to connect their sense of individual purpose with that of the college and the university.



The College of Science and Health recently defined a set of strategic priorities for the College, to stay focused on what must be done. Workshop participants utilized the college strategic plan to consider the what, the how, and the why of individual purpose.

Participants also examined three perspectives on DePaul's mission:

- As an American/Urban University: Doing our mission well as a university and civic institution
- As a Catholic institution in higher education: Educating the whole person, including character development, integrating faith and reason
- As a Vincentian institution: Contributing to a social mission for systemic change toward a more just society, reaching out and caring for people on the margins



Inspired by our Vincentian roots, at DePaul we understand that we are part of a community gathered together for the sake of a shared mission, one in which "each member shares in the good that is done by all." (Vincent de Paul)

## COLLEGE OF SCIENCE AND HEALTH HIGHLIGHTS

### Great Lakes Student Paleoconference



Photo provided by Myles Walsh

Prior to the COVID 19 restrictions, four Biology students (3 M.S. and 1 undergraduate) participated in the annual Great Lakes Student Paleoconference held at the University of Michigan, Ann Arbor. The students, Jonathan Allen, Myles Walsh, Riley Hacker, and Alexandra Krak (from left to right in photo above), presented their paleobiological projects:

Hacker, R. J., and K. Shimada. 2019. The first occurrence of an ichthyodectiform fish (Osteichthyes: Actinopterygii) from the Arlington Member (mid-Cenomanian) of the Upper Cretaceous Woodbine Formation in Texas [Third Annual Great Lakes Student Paleoconference, Ann Arbor, Michigan; November 8–10].

Walsh, M., and K. Shimada. 2019. Examination of torso morphology in extant terrestrial amniotes to infer the body morphology of quadrupedal non-avian dinosaurs [Third Annual Great Lakes Student Paleoconference, Ann Arbor, Michigan; November 8–10].

Allen, J. G., and K. Shimada. 2019. A marine bonebed of the Upper Cretaceous Niobrara Chalk, western Kansas [Third Annual Great Lakes Student Paleoconference, Ann Arbor, Michigan; November 8–10].

Krak, A., and K. Shimada. 2019. Using the extant megamouth shark, *Megachasma pelagios*, to infer the dentition of the fossil megamouth shark, *Megachasma applegatei* [Third Annual Great Lakes Student Paleoconference, Ann Arbor, Michigan; November 8–10].

# COLLEGE OF SCIENCE AND HEALTH HIGHLIGHTS

## CSH Colloquium

The 2019 recipients of the Excellence in Research Awards presented at the CSH Colloquium to a packed crowd, February 21, 2020.



Ralph Erber, PhD, Professor of Psychological Science in the Department of Psychology, presented "Tackling complex questions in a simple way: The factorial design and me"

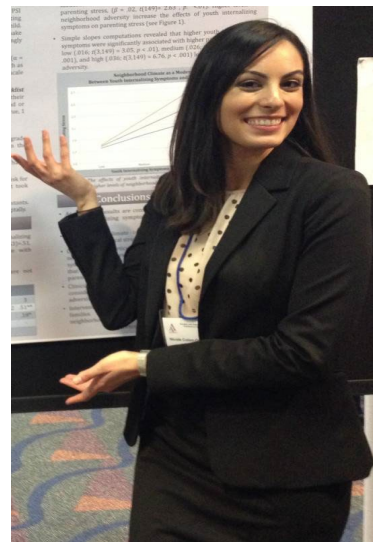
Joseph Mikels, PhD, Professor of Psychological Science, and Community Psychology in the Department of Psychology presented "The Positive Side of Aging."



## Clinical Psychology Doctoral Student Presents at American Psychological Association (APA)



**Ashley Castro**, a Psychology doctoral student, pictured at the APA Convention this year. She co-Chaired a symposium and presented preliminary meta-analytic findings on treatments for depression for African-American and Latinx children and adults.

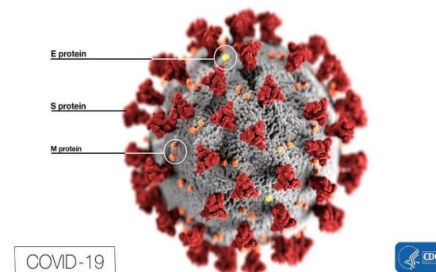


# College of Science and Health on the Front Line of COVID-19 pandemic

### CSH Community Conversation on COVID -19

As word about a new virus spreading globally increased, Department of Health Sciences experts - Sarah Connolly, PhD, Rebecca Fienberg JD, MBe, MS, Jessica Jerome, PhD, and L. Crisel Molina de Mesa, PhD, MPh got to work. In the early days of what came to be realized as a global pandemic, little was known about how the disease was contracted, spread, detected, mitigated, and eradicated. Thus our team of faculty developed a comprehensive view about this new disease – COVID 19 and shared their knowledge at a forum to students, faculty, and staff in the CSH community.

<https://twitter.com/DePaulHealthSci/status/1239685781171474432?s=20>



Prior to any clear understanding about the effectiveness of social distancing and masks, our Health Science experts in virology, epidemiology, global health, and ethics stood at the cutting edge discussing the risks and benefits of these approaches.



## COLLEGE OF SCIENCE AND HEALTH HIGHLIGHTS

In response to the evolving spread of the COVID-19 pandemic, the City of Chicago joined with the State of Illinois in issuing a Stay at Home and launched several other preventative measures. Our Health Science team of experts recognizing the importance of communicating these changes from a scientific perspective convened a second COVID-19 forum with updated information, online.



The Department of Health Sciences continues to serve as a leader in the College of Science and Health conversation on this issue.

Doug Bruce – Moderator



Sarah Connolly  
– Virology



Rebecca Feinberg  
– Ethics



Jessica Jerome  
– Global Health



L. Cricel Molina de  
Mesa  
– Epidemiology

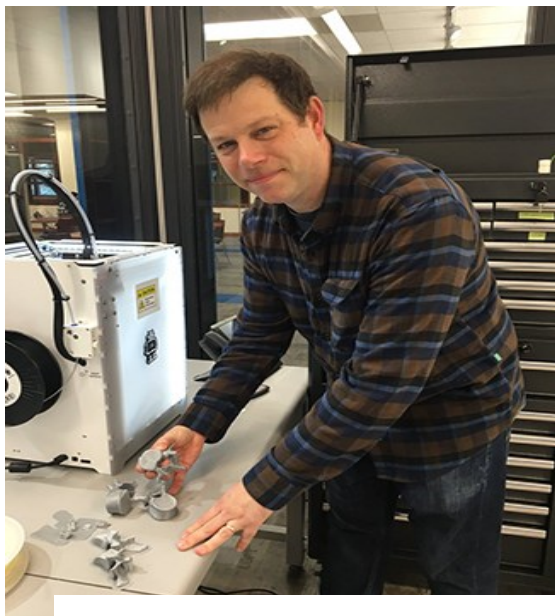


## COLLEGE OF SCIENCE AND HEALTH HIGHLIGHTS

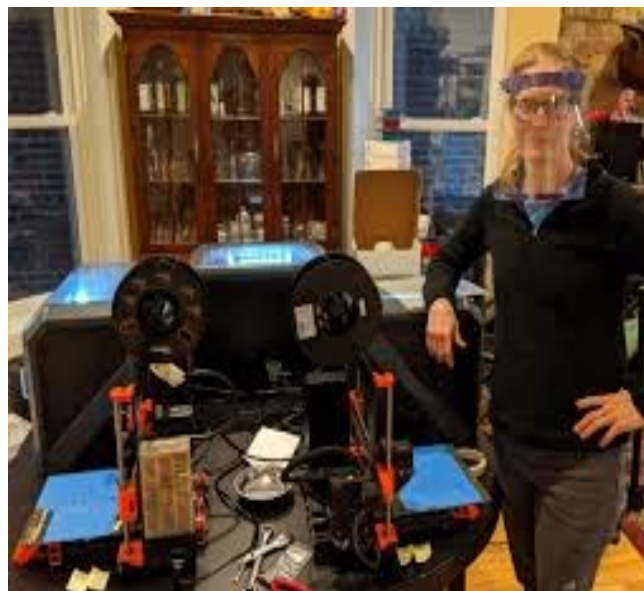
### DePaul University formed the [Illinois PPE \(Personal Protective Equipment\) Network](#) and became the largest producer of medical face shields in Illinois.

The Illinois PPE Network, a 100% donor driven network providing PPE to frontline workers across Illinois, is the brain child of Dr. Eric Landahl, Associate Professor, Physics and his wife - Sarah Rice, PhD, DPT, biochemist, clinician, and former Associate Professor and co-director of the Northwestern Feinberg School of Medicine MD/PhD program.

Embracing the academic, innovative maker, and Vincentian characteristics found within CSH; this network fulfills a need for PPE, creates a place to make PPE, and accepts donations.



**Eric Landahl**, PhD, Associate Professor & Graduate Program Director, Physics and Astrophysics

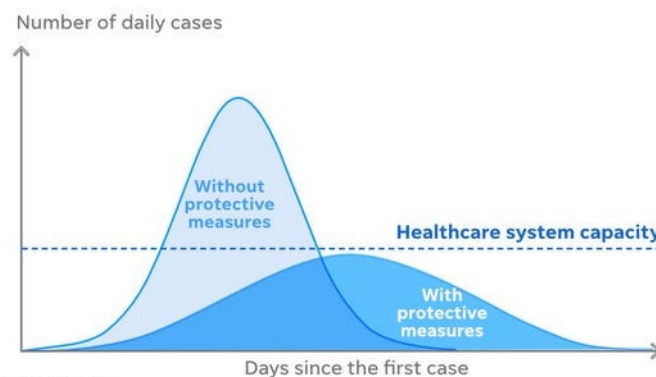


**Sarah Rice**, PhD, DPT

Originally formed at DePaul University, the Illinois PPE Network is now comprised of individuals from DePaul, Northwestern University, Chicago Public Schools, Chicago Public Libraries, the Museum of Science and Industry, the Swedish Face Shield Group, the Chicago Peace Fellows, Nation of Makers, and a multitude of Illinois makerspaces, libraries, and other schools. The network also partnered with several companies and institutions, including Triangle Die and Supply for die fabrication. Illinois PPE Network currently serves over 50 hospitals and other institutions in Illinois, such as Provident Hospital, University of Illinois Health (Chicago), Cook County Hospital, La Rabida Hospital, Swedish Covenant Hospital, Weiss Memorial Hospital, and Sinai Health System.

#### Flattening the curve

Mitigation efforts can help to reduce the number of daily cases and to reduce the pressure on the healthcare system



SOURCE: CDC

## COLLEGE OF SCIENCE AND HEALTH HIGHLIGHTS

### CSH Donates Personnel Protective Equipment (PPE)

As essential workers headed to hospitals and groceries stores, to pharmacies and food banks during the pandemic, our CSH first responders considered the question “What more can we do?”. The answer they arrived upon was to embody the Vincentian mission and contribute to others in need.

Our School of Nursing (SON), as well as the departments of Biological Sciences, Chemistry and Biochemistry, Health Sciences, and Environmental Science and Studies, recognized that with their courses moving online much of the Personnel Protective Equipment (PPE) needed for in-person sessions would not be used. Rather than save this PPE for later, these units were able to donate their PPE to several area hospitals supportive of our students that were in immediate need of life saving PPE.



In photos (left): Dr. **Elizabeth Aquino**, Associate Director, Master's Entry to Nursing Program and **Karlis Butler**, Simulation Support Specialist

In photo (right): Dr. **Charles Rubert Perez**, Assistant Professor in the Department of Chemistry and Biochemistry



### College of Science and Health Advisory Council member appointed to a national committee to create policy and disseminate information on the COVID-19 pandemic

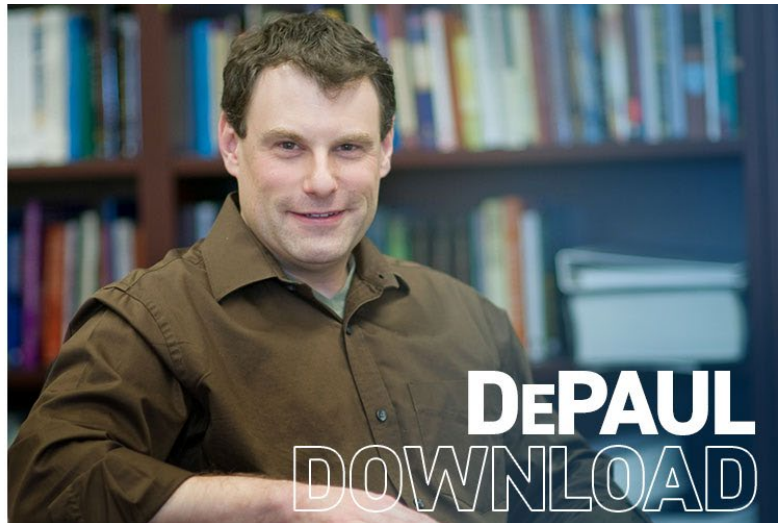
**Linda C. Degutis, DrPH, MSN, FRSPH**, is a proud DePaul alum, member of the Advisory Council for the College of Science and Health, and a nationally recognized leader for her policy and advocacy, as well as her work on initiatives focusing on prevention of injury, suicide prevention and intervention, and violence prevention. Most recently, Dr. Degutis was appointed to a national committee - the Advisory Group for the National Academy of Medicine-American Public Health Association COVID-19 Conversations Webinar series. This series is focused on the science behind the strategies, policies, prevention initiatives, and interventions to prevent the spread of the coronavirus and mitigate its impact. The website for more information, as well as registering for the webinars is: <https://covid19conversations.org/>



## COLLEGE OF SCIENCE AND HEALTH HIGHLIGHTS

### CSH experts give COVID-19 PODCAST

Bioethicists, Craig Klugman and attorney Valerie Koch [discuss their roles in the fight against COVID-19.](#)



### Dr. Joseph Ferrari joins a panel to discuss decluttering during pandemic

As the COVID-19 pandemic has caused many to work from home some are looking more closely at organizing spaces. Psychology Professor, Joseph Ferrari PhD. was featured on an 'ALI WARD' podcast with home organizing couple and icons Jamie and Phillip Hord (horderly.com), to discuss decluttering. Ali Ward is a leading 'comedy-science' show host, nominated for two Emmy awards in 2020. This podcast offered a unique and humorous blend of theory and practice. Dr. Ferrari is a leading global expert in the area of procrastination.



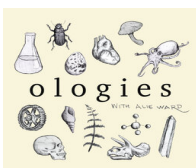
Joseph Ferrari, PhD



Jamie Hord



Phillip Hord



<https://www.alieward.com/ologies/oikology>

## COLLEGE OF SCIENCE AND HEALTH HIGHLIGHTS

Op  
Ed

Thought leadership that matters

The [OpEd Project Public Voices Thought Leadership Program](#) seeks to increase researchers' visibility and influence as thought leaders, especially women, who are underrepresented in the media. This competitive University-wide Public Voices Fellowship program featured four CSH faculty: Christie Klimas, Susan McMahon, Megan Greeson, and Douglas Bruce; Craig Klugman is a Co-Organizer of the program. The program involves four day-long seminars, coaching, mentoring, and writing, pitching, and publishing OpEds.



Christie Klimas, PhD is an Associate Professor in Environmental Science and Studies, and she published several OpEds during this fellowship.

[\*\*Holiday Jewelry Presents Could Be Contributing to Deforestation in the Amazon\*\*](#) in Truthout.

[\*\*For Lent, Let's Give Up A Treat That Exploits Child Labor\*\*](#) in America: The Jesuit Review

[\*\*From Covid-19 To Fashion: The Global Ripple Effect Of Our Actions\*\*](#) in Better



Susan D. McMahon, Ph.D. is Associate Dean for Research and a Vincent de Paul Professor of Psychology. Her published OpEds included the following:

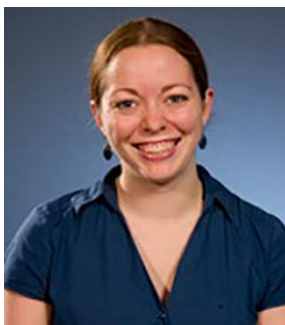
[\*\*School Violence: Recommendations from the Front Line.\*\*](#) [Psychology Today.](#)

[\*\*The Response to School Violence is a Major Concern for Teachers.\*\*](#) [The Hill.](#)

[\*\*Violence in Schools is a National Crisis.\*\*](#) [Psychology Today.](#)

[\*\*Teachers Suffer Too: School Violence is a Daily Reality.\*\*](#) [The Hill.](#)

[\*\*Violence and Other Forms of Violence Against Teachers: 5 Questions Answered.\*\*](#) [The Conversation.](#)



Megan Greeson, Ph.D. is an Associate Professor of Psychology, and Director of the Community Psychology Doctoral Program. She published an OpEd in Ms, [\*\*Weinstein Conviction To Be Celebrated, But Does Not Represent Justice For All.\*\*](#)



Douglas Bruce, Ph.D. is An Associate Professor And Chair Of Health Sciences. He Published [\*\*Doctors Lack Knowledge About Medical Cannabis Use. Their Patients Can Help\*\*](#) in the Health Care Blog.

## COLLEGE OF SCIENCE AND HEALTH HIGHLIGHTS

---

### GRADUATE STUDENT FEATURE

**Rolando Favela**, a graduate student in the MS in Environmental Science program.



The photo credit - Evan Montgomery

Rolando Favela received his undergraduate degree in Environmental Studies and then joined the MS program in Environmental Science in 2018. He focused on topics that are at the heart of the program: ecological restoration and urban landscape management. He is able to combine his role as departmental greenhouse manager with his studies. In particular, he carried out an independent project on integrated pest management. Rolando released ladybugs in the greenhouse to combat pest species like aphids and mealy worms. Driven by the Vincentian challenge of “What must be done?”, Rolando envisions using his skills from the Environmental Science degree program to make a difference in Chicago. He was also impressed that the program is leveraging his existing skills in horticulture to bridge the gap between theory and practice.



# COLLEGE OF SCIENCE AND HEALTH AWARDS, RECOGNITIONS & APPOINTMENTS

## DUOS (Doctoral and Undergraduate Opportunities for Scholarship)

Beginning in autumn 2007, a funding initiative was introduced through the College of Liberal Arts and Sciences to enhance student research opportunities in the Departments of Philosophy and Psychology. In 2011-2012 this tradition was continued for Psychology students when the College of Science and Health was created. This competitive initiative for which students apply, called DUOS, provides a stipend to a doctoral student and to an undergraduate student who work jointly on a project. This program enables DePaul undergraduates to do research or other creative activities with the guidance of a doctoral student mentor. Several research teams are funded each year. Congratulations to this year's recipients:



### Natural language processing approach to understanding awe

Undergraduate Student: **Abbey McClain**

Graduate Student: **Lauren Zervos**

Faculty Advisor: **Kimberly Quinn, Ph.D.**

### Does sharing gratitude change how you perceive yourself and others?

Undergraduate Student: **Nora Lewis**

Graduate Student: **Laurette McIlwee**

Faculty Advisor: **Ralph Erber, Ph.D.**

### Perceptions of sexual and relationship violence preventability among college males

Undergraduate Student: **Emily Patton**

Graduate Student: **Kayleigh Zinter**

Faculty Advisor: **Megan Greeson, Ph.D.**

### Factors in the development of relationships between underrepresented college students and institutional natural mentors

Undergraduate Student: **Mariana Bednarek**

Graduate Student: **Lidia Monjaras-Gaytan**

Faculty Advisor: **Bernadette Sanchez, Ph.D.**

# COLLEGE OF SCIENCE AND HEALTH AWARDS, RECOGNITIONS & APPOINTMENTS

## DUOS (Doctoral and Undergraduate Opportunities for Scholarship)



Discrimination and health insurance status: Effects on overall health

Undergraduate Student: **Madeline Mazanek**

Graduate Student: **Rebecca McGarity-Palmer**

Faculty Advisor: **Joseph Ferrari, Ph.D.**



Sexual assault response teams' (SARTs) motivations for development

Undergraduate Student: **Jessica Rice**

Graduate Student: **Annie Wegrzyn**

Faculty Advisor: **Megan Greeson, Ph.D.**



Finding the "Real" me: Exploring perceived tension between face-to-face and online presentations of the self

Undergraduate Student: **Adrian Leon**

Graduate Student: **Andrea Sanders**

Faculty Advisor: **Verena Graupmann, Ph.D.**



Does social exclusion influence willingness to reveal personal secrets?

Undergraduate Student: **Megan DeLire**

Graduate Student: **Natalie Mordini**

Faculty Advisor: **Verena Graupmann, Ph.D.**

The influence of electrodermal response on risk taking

Undergraduate Student: **Risha Vaughn**

Graduate Student: **Nathaniel Young**

Faculty Advisor: **Joseph Mikels, Ph.D.**

A meta-analysis of trauma-informed interventions for educators

Undergraduate Student: **Elena Gonzalez Molina**

Graduate Student: **Cori Tergesen**

Faculty Advisor: **Susan McMahon, Ph.D.**

## COLLEGE OF SCIENCE AND HEALTH AWARDS, RECOGNITIONS & APPOINTMENTS

### Clinical Psychology doctoral students matched to internships at prestigious sites around the country for 2020-2021

Bridget Brush - Children's Hospital Colorado  
Ashley Castro - Columbia University Irving Medical Center  
Alyssa Donovan - Advocate Illinois Masonic Medical Center  
Michelle Gilchrist - Duke University Medical Center  
Heather Marshall - Allegheny General Hospital  
Martina Mihelicova - Rocky Mountain Regional VA Medical Center  
Eric Peist - Nationwide Children's Hospital  
Amber Pham - Cincinnati VA Medical Center  
Arturo Soto-Nevarez - ANDRUS Memorial Hospital  
Stacy Stewart - Sarah A Reed Children's Center



*Anne Saw, Assistant Professor of Psychology, congratulates her first doctoral student, Kris Ma, earning her Ph.D. in Clinical Community Psychology.*

### CSH Diversifying Higher Education



**Jesus Solano-Martinez**, a Clinical Child Psychology doctoral student, was awarded the **Diversifying Faculty in Illinois (DFI) Fellowship for 2020-2021**. This prestigious fellowship is available for up to four years. The goal of DFI is to increase the number of underrepresented minority full-time tenure track faculty and staff at Illinois' two- and four-year, public and private colleges and universities. Diverse faculty and student enrollment enhances the educational experience of all students and better prepares students to work and live in an increasingly diverse world. Congratulations, Jesus!



## COLLEGE OF SCIENCE AND HEALTH AWARDS, RECOGNITIONS & APPOINTMENTS

**Dr. Suling Li has been appointed Chief Nursing Officer and Director of the School of Nursing at DePaul University**



**Suling Li**, PhD, RN, APN, FNP-BC has been appointed as the Director for the School of Nursing beginning in July 2020. Previously, Dr. Li was the Associate Dean and Director of the Graduate Studies in Nursing Programs at Lewis University. We thank Dr. Kim Amer, who has done a tremendous job serving as Interim Dean and is returning to the faculty. We are very excited for Dr. Li to take on this rewarding role in leading the Nursing School at DePaul and creating a new vision moving forward.



**Kim Amer, PHD, RN**



**Ann Fennell**, MS, CCC-SLP, has been appointed as a Clinical Associate Professor and the Director of Clinical Education of the Speech-Language Pathology Program.



**Elia Olivares**, PhD, CCC-SLP is also joining the Speech Language Pathology Program as a Clinical Associate Professor and Director of Culturally & Linguistically Diverse Programs in Speech Language Pathology.



**Hillary Napier-Gondek**, OTD, OTR/L has been appointed Clinical Assistant Professor and Academic Fieldwork Coordinator in Occupational Therapy.



# COLLEGE OF SCIENCE AND HEALTH AWARDS, RECOGNITIONS & APPOINTMENTS

## DePaul's Chapter of Psi Chi National Honor Society inductees



Psi Chi ( $\Psi\chi$ ), founded in 1929, is the international honor society in psychology.

DePaul's Chapter of Psi Chi inducted 27 new members and next year's officers on Monday, May 11, 2020. Usually new members are inducted at Psych Night; however, due to the COVID-19 pandemic, the induction ceremony took place remotely on Zoom. The chapter took a group picture at the end of the ceremony which is the yearly tradition.



# COLLEGE OF SCIENCE AND HEALTH AWARDS, RECOGNITIONS & APPOINTMENTS

## Congratulations to the CSH Honors Awards Recipients!

Outstanding undergraduate students, and faculty mentor were honored as part of the annual Honor's Celebration tradition, recognizing recipients with individual awards in community service, research, mentoring, and departmental students of the year. The in-person event was cancelled due to COVID-19.

### Award

### Recipient

#### Outstanding Community Service Award

The Outstanding Community Service Award seeks to acknowledge one CSH undergraduate senior who has made meaningful and significant contributions to the betterment of society through their involvement in community service. This award recognizes one student who is truly distinguished through individual community service efforts.



Claire Black

#### Excellence in Undergraduate Research Award

The Excellence in Undergraduate Research Award was established to honor one CSH undergraduate senior who conducts exceptional research, articulates his or her research to others, and enhances the DePaul mission in integrating research into academic learning experiences.



Jazlyn Marcos

#### Walter A. Pranger Award

The Walter A. Pranger Award is given each year to a mathematics undergraduate major with outstanding performance in upper-level coursework as well as significant contributions to the intellectual life of the department.



Devin Becker

#### Faculty Mentor of the Year

The College of Science and Health acknowledges one CSH faculty who regularly goes above and beyond their duties and responsibilities to mentor undergraduate students. The award acknowledges faculty who truly challenge and prepare students inside and outside of the classroom and lab for a future in the fields of science and health.



Dr. Cricel Molina De Mesa

# COLLEGE OF SCIENCE AND HEALTH AWARDS, RECOGNITIONS & APPOINTMENTS

Biology  
Student of the Year



**Luke (Mildred) Devereux**

Chemistry and Biochemistry  
Student of the Year



**Sydney Foley**

Environmental Science  
and Studies  
Student of the Year



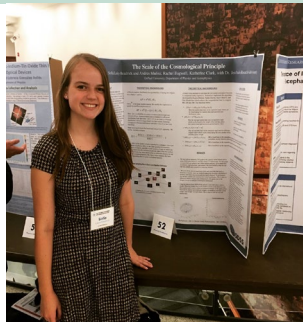
**Kelly Velazquez**

Dorothy Kozlowski Award  
Health Sciences  
Student of the Year



**Jessica Rosato-Wyan**

Mathematical Sciences  
Student of the Year



**Sofia Lasky-Headrick**

Neuroscience  
Student of the Year



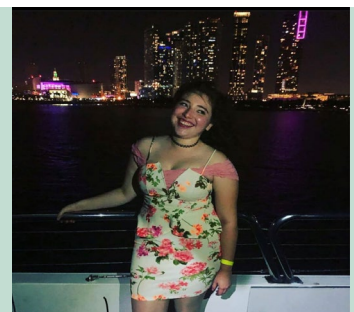
**Claire Black**

Physics and Astrophysics  
Student of the Year



**Sam Smiley**

Psychology  
Student of the Year



**Francesca Chavez**

# COLLEGE OF SCIENCE AND HEALTH AWARDS, RECOGNITIONS & APPOINTMENTS

## Dean's Award for Outstanding Academic Achievement Recipients

The Dean's Award for Outstanding Academic Achievement is awarded to students who graduated with at least a 3.50 GPA.

### **Biological Sciences - Outstanding Academic Achievement**

#### **Recipient**

Jennifer N Stamos

Alec Sun Seng

Kathryne Rose Lafon

Yekaterina S. Antonishina

Jacqueline Vazquez Dedelow

Emma Laine F Allen

Timothy M Walsh

Alima Sajwani

Kyle Kasparian

Mildred Victoria Devereux

Gabriella Gasparini

Lily L. Boland

Yalda Feiz

Farah Tasneem Farooqui

Grant D. Andersen

Daniela Garza

Zachary Joseph Gembara

Ashley M. Johnson

Trey James Rendon

Farah Tasneem Farooqui

Simone T. Rhodes



### **Chemistry and Biochemistry - Outstanding Academic Achievement**

#### **Recipient**

Julia Christina Petrescu

Isabella D. Reda

Sydney Foley

Arlene Sisson

Daniel Jacob Olesak

**DEPAUL  
CHEM &  
BIOCHEM**

### **Environmental Science and Studies - Outstanding Academic Achievement**

#### **Recipient**

Austin Andrew Grzebieniak

Agni Veronica Kallinicou

Grace Elizabeth Berent

Annamarie G. Pas

Julia Boucher

Emma C. Solomon

Emma Carolyn Mares

Hanna Lavin

Emily Grace Cheshire

John Cosmas Halekakis

Kelly Velazquez

Jazlyn Marcos

Caley B. Smid

Linda Susan Chavez

Joseph Michael DeVito

Madison Marie Janakis

Breghan Marcella Klein

Emma Noelle Casey



## COLLEGE OF SCIENCE AND HEALTH AWARDS, RECOGNITIONS & APPOINTMENTS

### **Health Science and Studies - Outstanding Academic Achievement**

#### **Recipient**

Maximillian A. Ramirez	Camille S Cardenas
Cecelia Woods Fawcett	Meher A Din
Radhwa Ramadan	Jessica Delesio
Mariana Elise Lawrence	Mackenzie Brooke Furnari-Stickney
Jawairia A Nagani	Eduardo R Cardiel
Libby Springer	Kayla Quebral
Agnieszka Suminski	Saahil R Patel
Radovan Arsic	Julia A Baranski
Adrian Louise Galloway	Andriana M Evangelopoulos
Aisha Patel	Julianna Dyer
Jessica Rosato-Wyan	Kelly A Campbell
Sydney Hunt	Amani Johnson
Alan Zientarski	Celine Terese Reilly
Molly Rose Nealon	Ryan J Atilano
Kimberly McEvilly	Christiana A Chambers
Aisha A Ahmed	Anna Sophia Kill
John Henri Arrizola	Israh Y Abdeljaber
Maggie Keller	Hannah Shukri David
Sophie R Chishty	Alice Leisy Mckhann
Vincent Siu	Elli D Parisi
Grace E Hoegler	Athena Maria Gonzalez
Roni Klein	Emily J Miller
Skylor A Hilger	Jessica R Cothorn
Erica C Sanchez	Morgan M Bartelment
Julia Sorrentino	Kelsey Oliva
Claire Elizabeth Newby	Rutendo E Chimbaru
Kristin N Huffman	Lucy Sachs Fogel
Juan Diego Cuecha	Therese O'Malley
Ilda Susterac	Abbas Dahodwala
Sofia Mary Halili	Hannah Marie Nicholson
Camille S Cardenas	Erin Kathleen McMillen
Meher A Din	Brenna G Barry

# COLLEGE OF SCIENCE AND HEALTH AWARDS, RECOGNITIONS & APPOINTMENTS

## **Mathematical Sciences - Outstanding Academic Achievement**

### **Recipient**

Sara Ann Townsend	Gordon C Dyslin
Mariusz Henryk Wiesiolek	Sarah Kameel Mikho
Thomas Charles Finnegan	Cullen Daniels
Samuel Harrison Mogul	Maciej M Piwowarczyk
Max Janjan de Bruijne	

## **Neuroscience - Outstanding Academic Achievement**

### **Recipient**

Karson Elizabeth Barrett	Hannah Marquis
Colleen R Skrbec	Jennifer Valerie Watson
Manali Shailesh Shah	Natalya Ligas
William P Smith	Courtney Barber
Gabriell Carpenter	Tripp Tuff
Claire Black	Maren Elizabeth Anderson
Marissa Udine	

## **Nursing - Outstanding Academic Achievement**

### **Recipient**

Jill Yanong Maryan

## **Physics and Astrophysics - Outstanding Academic Achievement**

### **Recipient**

Robert William Coulson	Sam E Smiley
Sinead A Humphrey	Kyle Eric Benjamin
Nicolas Alexander Clarisse	Danielle Marie Simenauer

## **Psychology - Outstanding Academic Achievement**

### **Recipient**

Sydney R Begerowski	Tammy T Le
Danya Sofia Soto Leyva	Alexis Kristine Jimenez
Lindsey Baglione	Noor Arjmand
Margaret Ann Koshollek	Generosa I Rodriguez
Amanda D Whittinghill	Amanda Lily Nayas
Abbey R McClain	Elizabeth Carrillo
Cristina Isabel Candel	Taylor M Rick
Elizabeth A Grant	Mikaela Coleman
Ekaterina Makkaveyev	Maria Ximena Valenzuela
Patrick J Geraghty	Amelia Faith Hudson
Alma L Quiroz	Vienna Prieto

# COLLEGE OF SCIENCE AND HEALTH AWARDS, RECOGNITIONS & APPOINTMENTS

## Psychology - Outstanding Academic Achievement

### Recipient

Kalee R Principato	Alexa Ball
Ana V Thompson	Eleanor Morningstar Houston
Madison Montgomery Crompvoets	Tre'von Demetrius Hawkins
Nicholas William Reilly	Chante K Stonewall
Samantha Therese Lehman	Grant Michael Bechtold
Katlin A Gruden	Gina Puig
A. Turner	Stephanie Rosales
Sabina L Gomez	Taylor Elaine Moreland
Iris V Sanchez Suarez	Gemma Young
Amanda Simmons	Monica Estrada
Griffen Robert Emmet	Mikhaella Rae Mingoelli
Courtney Erin Lewis	Angel Rodriguez
Megan L Macinnes	Tatiana M Areizaga
Regan Michael Desautels	Natalie Siegel
Negin Motlagharani	Heidi Mosquera
Adrian Leon Taveras	Cara Anne Jimenez
Lauren Faye Walinske	Harlow K Righetti
Julia Heringhaus	Tyler Joseph Jones
Jakob Thomas Carballo	Annie Lee McLaurin
Ashley Mandeldove	Leslie Castillo
Shelby R Muschler	Emma K Graetz
Emily E Patton	Nora C Lewis
Lyndsay R Raczk	Kira Salsman
Sarah Rose Annette Reynolds	Olivia Noble
Mereya Lachel Goetzinger	Olivia Bower Simons
Isabelle B Gallant	Sahra Jama
Savitri S Lazarus	Giselle E Sourou
Rachel M Bell	Carly Mary Hart
Melissa Mena	Timisha A Ivie
Francesca K Chavez	Kameron M Kaplan
Christine P Augustin	Klaudia Tryskuc
Lesley K Sahagun	Connor Mathew McCluskey
Talia Anson Neuhaus	Nicole Olczyk
Lauren Keeley Hagelstein	Katherine M Resch
Ricardo Medina	Alexandra Cavalier
Sarah Lynne Pelletier	Ethan Hallberg
Jessica M Rice	Mahnoor Hassan
Chase M Heidner	Nicole Kathleen Geanous
Kevin Turkowski	Madeline Mazanek
Raina Nicole Predny Kalas	Brooke A Zant

**Social distancing birthday surprise for graduate students in psychology.**





## 2020 Excellence in Research Award and Mid-Career Excellence in Research Award

Each year, the College of Science and Health recognizes faculty who have made significant scientific contributions in their area of research by bestowing the Excellence in Research Award and Mid-Career Excellence in Research Award. The Excellence in Research Award recognizes a Full Professor's outstanding contributions to the field over the course of their career, and the Mid-Career Excellence in Research Award acknowledges an Associate Professor's outstanding contributions to their field.

The recipients of the 2020 awards are **Bridget Tenner, Ph.D, Professor Mathematical Sciences**, and **Douglas Bruce, Ph.D.**, Associate Professor. The names of both award recipients will be engraved on a plaque displayed in the Dean's Suite and each will be invited to give a featured research presentation during the 2020-2021 academic year.

### Bridget Tenner, Ph.D. – Excellence in Research Award



Dr. Bridget Tenner, Professor of Mathematical Sciences, joined DePaul in 2007 and was promoted to Professor in 2017. Her research as a combinatorialist focuses on the mathematics of discrete structures and specifically highlights her interests in algebraic, enumerative, and topological questions. Early in her career she developed an electronic database for pattern avoiding permutations, which was among the first of such resources in the field. She has authored over 40 publications covering topics on the combinatorics of partially ordered sets, permutations, boolean complexes, sorting algorithms, and Coxeter groups, illustrating the depth and breadth of her research record. The recognition of the excellence in her quality of work has provided funding from various internal grants and most notably, an external Collaboration Grant for Mathematicians from the Simons Foundation. Dr. Tenner's research has been published in premier journals and has been cited 453 times according to

Google Scholar. As an internationally recognized expert in combinatorics, her innovative work will have an enduring impact on her colleagues, students and the field of mathematical sciences.

### Douglas Bruce, Ph.D. – Mid-Career Excellence in Research Award



Dr. Douglas Bruce, Chair of the Department of Health Sciences, joined DePaul in 2008, was appointed Assistant Professor in 2012, and was promoted to Associate Professor in 2017. His research focuses on the etiology of gay men's health disparities, including HIV/AIDS, substance use, and mental health, and emphasizes the secondary prevention needs of young gay and bisexual men living with HIV. Recently, his work has focused on the role of cannabis in the lives of these young men, and has extended to cannabis use among other persons living with chronic disease. Dr. Bruce has secured over \$1 million in external funding for his research from agencies including the National Institute of Mental Health and the National Institute on Drug Abuse. Dr. Bruce has published 29 journal articles, many in high impact journals, and has 892 citations according to Google Scholar. His grant

record and publications illustrate his influence in the field. Dr. Bruce's ongoing work to understand health behavior in marginalized communities has significant real-world implications and fits well with the Vincentian mission.

# COLLEGE OF SCIENCE AND HEALTH AWARDS, RECOGNITIONS & APPOINTMENTS

---

## 2020 Excellence in Teaching Award Congratulations

The 2020 recipients of the College of Science and Health Excellence in Teaching Award for tenure-line faculty are James Montgomery from Environmental Science & Studies and Shannon Simonovich from the School of Nursing.

Starting next year, the college will be permitted to award up to two additional awards annually, for term/adjunct faculty.

**James A. Montgomery, Ph.D.**  
Associate Professor  
Environmental Science and Studies



**Shannon Simonovich, Ph.D., RN**  
Assistant Professor  
School of Nursing

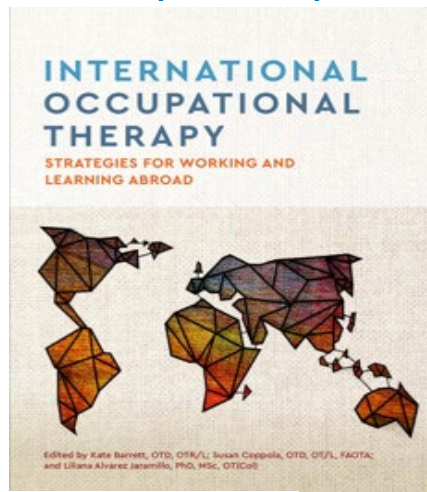
Please join the college in congratulating Jim and Shannon and to thank them for their outstanding contribution to DePaul education!

## COLLEGE OF SCIENCE AND HEALTH FACULTY PUBLICATIONS

### Occupational Therapy Program Director produces publication with global reach



Kate Barrett, OTD, OTR/L  
Director & Associate Professor, Occupational Therapy Program



International Occupational Therapy.

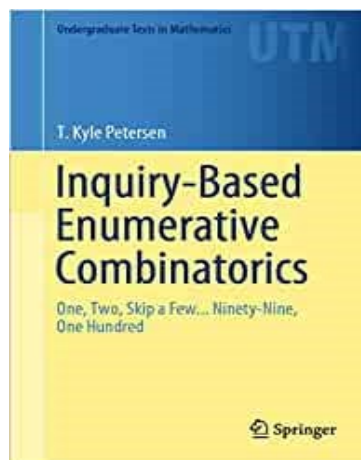
Editors: Kate Barrett, OTD, OTR/L, Susan Coppola, OTD, OT/L, FAOTA, & Liliana Alvarez Jaramillo, PhD, MSc, OT(Col)

Published by AOTA Press, 2020.

### Math Faculty writes undergraduate textbook for mathematics students



T. Kyle Petersen PhD  
Professor, Mathematical Sciences



Inquiry-Based Enumerative Combinatorics:  
One, two, skip a few...ninety-nine, one  
hundred,  
Springer Undergraduate Texts in  
Mathematics (2019), 238 pages.

### Biology Faculty research cover feature on **April 2020 issue of Trends in Ecology and Evolution** and published in **Nature Plants**



Jalene LaMontagne PhD  
Associate Professor, Biological Sciences



LaMontagne, J.M., Pearse, I.S., Greene, D.F. *et al.* Mast seeding patterns are asynchronous at a continental scale. *Nat. Plants* **6**, 460–465 (2020).  
<https://doi.org/10.1038/s41477-020-0647-x>

## COLLEGE OF SCIENCE AND HEALTH GRANTS

---

### External grants awarded to CSH faculty and staff (July 1, 2019 – Jan. 15, 2020)



**Molly M. Brown, PhD.**, Assistant Professor, Clinical-Community Psychology, Psychology

“Bridge Communities Trauma-Informed Care Assessment” | \$6,578 from Bridge Communities Inc.



**David C. Jabon PhD**, Chair, STEM Studies Department | Director, Quantitative Reasoning Center | Associate Professor, STEM Studies and Mathematical Sciences STEM Studies, Mathematical Sciences

“Building A Teacher Knowledge Base For The Implementation Of High-quality Instructional Resources Through The Collaborative Investigation Of Video Cases” | \$617,710 from the National Science Foundation

“Elementary Math Specialist Community of Practice” | \$86,932 from Children First Fund

“Expanding the Impact of the Elementary Math Specialist Program” | \$200,000 from CME Group Foundation



**Leonard A. Jason, PhD.**, Director of Center for Community Research; Professor, Clinical Psychology, Community Psychology

“Maintenance and Incidence of ME/CFS Following Mono” | \$2,857,865 from National Institutes of Health



**W. LaVome Robinson, PhD.**, Professor, Clinical Psychology, Community Psychology

**W. LaVome. Robinson and Leonard Jason**,  
“Preventing Suicide in African American Adolescents” | \$6,615,750 from National Institutes of Health

## COLLEGE OF SCIENCE AND HEALTH GRANTS

---

### External grants awarded to CSH faculty and staff (July 1, 2019 – Jan. 15, 2020)



**Jalene M. LaMontagne**, PhD., Associate Professor, Ecology  
Biological Sciences

"MRA: The Influence of Climatic Dipoles" | \$351,850 from the National Science Foundation



**Daniel R. Mead, DNP, APRN, NP-C, CHSE** Associate Director, Simulation and Nursing Laboratories; Simulation Laboratory Educator

"Nurse Educator Fellowship Program FY2020" | \$10,000 from the Illinois Board of Higher Education



**Orson Morrison**, PsyD, Director of DePaul Family and Community Services (FCS)

"Family & Community Services: CPS Task Orders FY'20" | \$50,149 from the Chicago Board of Education



**Bernadette Sanchez**, PhD., Professor, Community Psychology

"Collaborative Research: A Multi-level Investigation of STEM Mentoring: Outcomes for Middle School Youth, their Mentors, and Partner Organizations" | \$533,257 from the National Science Foundation

"The MEDLAB Experience - Museum Education in Diversity for Laboratory and Biological Experiences" | \$229,722 from the National Science Foundation



**Quinetta D. Shelby**, PhD., Associate Professor, Inorganic Chemistry / Chair  
Chemistry and Biochemistry

"Illinois LSAMP STEM Pathway and Research Alliance" | \$110,000 from the National Science Foundation



**Russell L. Steiger**, PhD, Adjunct Faculty, Psychological Science, Psychology

"NYU-AD social psychology research" | \$30,000 from New York University

# COLLEGE OF SCIENCE AND HEALTH GRANTS

---

## New College-Wide External Grant Initiatives

Several exciting new grant initiatives have been going on over the past year. These efforts build upon our strategic planning priority featuring research, and highlight new efforts to build grant-writing capacity and engage in interdisciplinary collaboration.

### Grant Writers' Seminars and Workshops (GWSW)

As a follow-up to the grant-writing workshop in the Fall of 2018, in which about 68 faculty, staff, and students from CSH and CDM participated, Phase I started in 2019-2020. A call for proposals went out in the fall, and several people applied to participate. This spring, 5 CSH faculty engaged in a workshop (moved to an online-format due to COVID-19) with GWSW staff on June 2<sup>nd</sup> and June 3<sup>rd</sup>. Each faculty participated in a group workshop, as well as an individual feedback session on their preliminary NSF or NIH grant proposals. The funding for this program was shared between Academic Affairs and CSH.

- Margaret Bell, Assistant Professor, Biological Sciences
- Jocelyn Carter, Associate Professor, Clinical Psychology
- Jalene LaMontagne, Associate Professor, Biological Sciences
- Kimberly Quinn, Associate Professor, Psychological Science
- Kashica Webber-Ritchey, Assistant Professor, Nursing

### New collaborative grants have been submitted to support the college and especially our students.

#### ○ **Howard Hughes Medical Institute Inclusive Excellence Pre-Proposal**

The team includes Dr. Jesus Pando, Chair of Physics and Astrophysics; Dr. Margaret Silliker, Chair of Biological Sciences; Dr. Quinetta Shelby, Chair of Chemistry and Biochemistry; Dr. Susan McMahon, Associate Dean and former Chair of Psychology and Dr. Bernhard Beck-Winchatz, STEM Center Director.

#### ○ **NSF Scholarships in Science, Technology, Engineering, and Mathematics (S-STEM)**

The EPITEM (Engage and Persist in STEM) Project at DePaul University was submitted in April.

The Team includes Dr. James Montgomery, Environmental Science and Studies, Dr. Luciano Berardi, Center for Access and Attainment, Dr. Bernhard Beck-Winchatz, Director of STEM Studies, and Dr. Susan McMahon, Associate Dean for Research.

# COLLEGE OF SCIENCE AND HEALTH GRANTS

## 2020 Faculty Summer Research Grants

The Faculty Summer Research Grant (FSRG) program is designed to support ongoing research, to give faculty members an opportunity to develop new areas of research, and to help faculty become more competitive for external awards. Recommendations are made by the CSH's Research and Faculty Development committee, which is comprised of faculty nominated by their home academic units and appointed by the dean.

Congratulations to this year's FSRG recipients who will be conducting the following research this summer:

**Emily Barnard, Ph.D.**

Department of Mathematical Sciences  
Triangulations, Frieze Patterns and Related Posets

**Sarah Bockting-Conrad, Ph.D.**

Department of Mathematical Sciences  
Exponential Formulas Involving the Double-Lowering Operator Psi for Tridiagonal Pairs Of Racah Type

**Jason Bystriansky, Ph.D.**

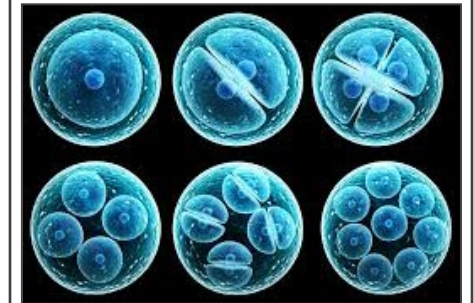
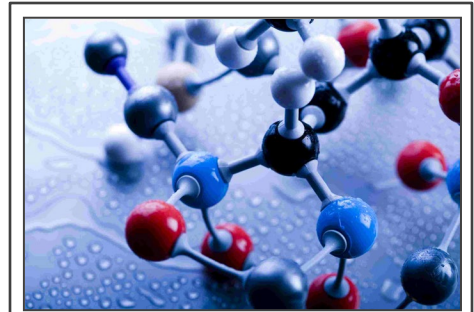
Department of Biological Sciences  
Acid-Base Balance in The Eastern Oyster (*Crassostrea Virginica*) During Chronic Exposure to Elevated CO<sub>2</sub> and Lead

**William Chin, Ph.D.**

Department of Mathematical Sciences  
Estimation of Kelly Fraction Bet

**Jingjing Kipp, Ph.D.**

Department of Biological Sciences  
Characterization of Two Novel Transgenic Mouse Models with Retinoic Acid Receptor Alpha Conditionally Knocked Out in the Ovary



## COLLEGE OF SCIENCE AND HEALTH GRANTS

### 2020 Faculty Summer Research Grants (continued)



**Jalene LaMontagne, Ph.D.**

Department of Biological Sciences

Boreal Forest Conifer Cone and Seed Characteristics Under Warming and Elevated CO<sub>2</sub>



**Eric Landahl, Ph.D.**

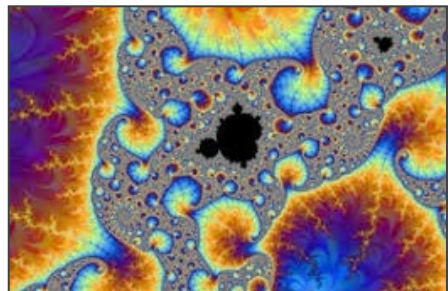
Department of Physics

Invisible Electrons: Light Producing Strain in Semiconductor Devices

**Ida Salusky, Ph.D**

Department of Psychology

The Role of Identity and Supportive Social Networks in College Persistence for Undocumented First-Generation College Students



**Shannon D. Simonovich, Ph.D., RN**

School of Nursing

Examining the Cross-Sectional and Longitudinal Relationship between Food Insecurity and WIC Participation: 1995-2015



**Bridget Tenner, Ph.D.**

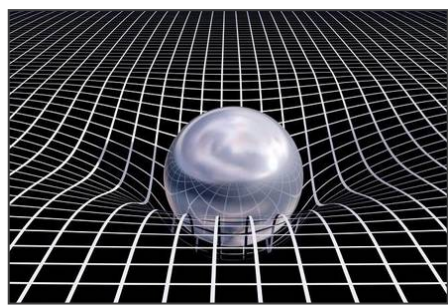
Department of Mathematical Sciences

Problems in Discrete Isoperimetry

**Susan Tran, Ph.D**

Department of Psychology

Longitudinal Examination of Undergraduate Students' Health Status and Health Behaviors



**Jess Vogt, Ph.D.**

Department of Environmental Science and Studies

Expanding LUFA Research on Urban Forest Stewardship & Sustainability in the Chicagoland Region



**Thank you to all contributors for your work on this newsletter!**

If you have an idea for features, honors, awards, events, and/or news items that you would like considered, please send them to [CSHDean@depaul.edu](mailto:CSHDean@depaul.edu), or contact the CSH Newsletter Publication Editors [Kurtis Todd](#) and [Susan D. McMahon](#).



Kurtis Todd, MBA, MS  
Sr. Executive Assistant to Dean



Susan McMahon, PhD.,  
Associate Dean for Research  
Vincent de Paul Professor of Psychology



**DEPAUL UNIVERSITY** |

**COLLEGE OF  
SCIENCE AND  
HEALTH**

Fall 2019-Spring 2020 Newsletter